

**cti**  Living



---

THE FALL  
**GUIDE**

---

2024



# YOU'LL FALL FOR OUR AUTUMN COLORS



The 12" Crackle Planter planted by Capogna Flowers, our plant material partner for the Fall Guide 2024.

4  
Boho Festival

10  
Botanical Glam

16  
Late Summer

17  
Novelty

22  
Orders

24  
Basics & Trays



# BOHO FESTIVAL



Handcrafted Patterns



Vintage Bold Colors

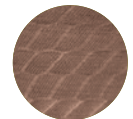
## 1 Freeport



Blush Raisin



Blush Ginger



Washed Chocolate



**7" Freeport Cover Pot**  
RT1732T  
OD 7.1" HT 7.0"  
Cap. 0.8 Gal



**10" Freeport Planter**  
DP1732P  
OD 10.0" HT 6.9"  
Cap. 1.5 Gal



**10" Freeport Hanging Basket**  
HG1732P  
OD 10.6" HT 6.5"  
Cap. 1.5 Gal

**2** Helix



Sunglow  
Yellow



Raisin



Dark  
Chocolate



**12" Helix Planter**  
DP795L  
OD 12.0" HT 9.4"  
Cap. 2.5 Gal  
\* Also available in 8", 10", 13", 16", 19"



**12" Helix Hanging Basket Round Rim**  
HG795G  
OD 12.3" HT 6.7"  
Cap. 2.0 Gal  
\* Also available in 11", 13"

"Bring a Boho Festival feel to the backyard with this style that breathes color, nostalgia and a free-spirited vibe."



**12" Helix Bowl**  
BL790F  
OD 12.0" HT 5.9"  
Cap. 1.7 Gal  
\*Also available in 16", 17"

Chantel Barizo, Accounting Staff  
and Camilo Buitrago, Marketing  
& Communications, with the  
10" Riverstone Low Profile Square

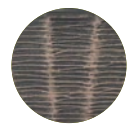


3

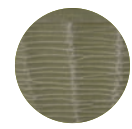
# Riverstone



Cappuccino Wash



Cocoa Berry



Mossy Stone



**10" Riverstone Low Profile Square**  
SS1180N  
OL 10.0" HT 5.7"  
Cap. 1.5 Gal



**12" Riverstone Planter**  
DP1180L  
OD 12.0" HT 9.4"  
Cap. 2.5 Gal  
\* Also available in 11"



**12" Riverstone Hanging Basket**  
HG1180H  
OD 11.9" HT 6.7"  
Cap. 2.0 Gal

4

# Piper



Vintage Wood



Indigo Green



Powdered Beige Grey

**12" Piper Planter**  
DP1304F  
OD 12.2" HT 8.8"  
Cap. 2.5 Gal  
\* Also available in 13", 16"

5

# Sandthatch



Powdered Clay



Washed Ginger



Hazel White



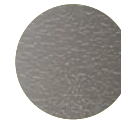
**14" Sandthatch Planter**  
TTP339H  
OD 14.0" HT 15.0"  
Cap. 7.6 Gal

**14" Sandthatch Bowl**  
TBL339E  
OD 14.0" HT 6.0"  
Cap. 2.8 Gal

**17" Sandthatch Oval**  
BV339F  
OD 17.0" HT 6.0"  
Cap. 2.2 Gal

6

# Birch



Distressed Cedar



Powdered Clay



Hazel White



**12" Birch Oval**  
RB1371H  
OD 12.0" HT 5.5"  
Cap. 1.2 Gal  
\* Also available in 16"



**14" Birch Planter**  
DP1371D  
OD 14.0" HT 11.7"  
Cap. 4.7 Gal  
\* Also available in 18"





Aimee Xiao,  
Designer, with  
the 14" Sandthatch  
Planter and Bowl



**7** Keke



Powdered  
Clay



Powdered  
Cappuccino



Hazel  
White



**8" Keke Planter**  
DP1914R  
OD 8.0" HT 6.5"  
Cap. 1.0 Gal





# BOTANICAL GLAM



Refined Materials



Deep Earthy Tones

1

## Scalloped Flare



Brushed  
Champagne



Brushed  
Antique Brass



Champagne  
Taupe



**13" Scalloped Flare Planter**  
TDP903E  
OD 13.0" HT 11.5"  
Cap. 4.1 Gal  
\* Also available in 10", 16", 19", 20"



**15" Scalloped Flare Low Urn**  
DU903D  
OD 15.0" HT 10.0"  
Cap. 3.6 Gal



**17" Scalloped Flare Bowl**  
BL903C  
OD 16.9" HT 6.3"  
Cap. 3.6 Gal  
\* Also available in 12"

2

# Wallace



High Gloss  
Rose Copper



High Gloss  
Pearl Green



High Gloss  
Silk

### 12" Wallace Hanging Basket

HG1310G  
OD 11.7" HT 6.7"  
Cap. 2.1 Gal

"Sophistication meets coziness.

Refined metallic and stone elements molded into organic forms producing a glamorous aesthetic."



### 12" Wallace Planter

DP1310M  
OD 12.0" HT 9.4"  
Cap. 3.1 Gal  
\* Also available in 10", 15".

3

# Crackle



Bronze  
Chalk Fusion



Pewter  
Chalk Fusion



Rose Copper  
Chalk Fusion



### 12" Crackle Hanging Basket

HG1235H  
OD 12.0" HT 6.7"  
Cap. 2.0 Gal



### 12" Crackle Window Box

WB1235N  
OL 12.0" OW 7.9" HT 6.0"  
Cap. 1.5 Gal

### 12" Crackle Planter

DP1235H  
OD 12.0" HT 9.4"  
Cap. 2.9 Gal  
\* Also available in 13", 14"

4

# Hobnail



**13" Hobnail Planter**  
DP1248H  
OD 13.0" HT 11.1"  
Cap. 4.1 Gal



**NEW**  
Retro Copper



**NEW**  
Retro Gold



**NEW**  
Retro Silver



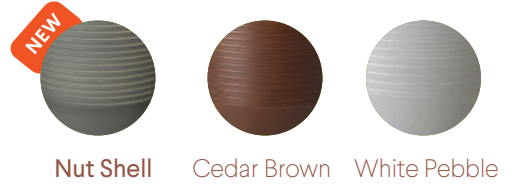
Al Shivrj,  
Sales Account Manager  
with the 18" Hobnail Bowl

**18" Hobnail Bowl**  
BL1248C  
OD 18.0" HT 6.5"  
Cap. 4.7 Gal  
\* Also available in 12"

**Nicole Maliteare,**  
Sales Account Manager  
with the 14" Cylinder Planter



**5** Cylinder

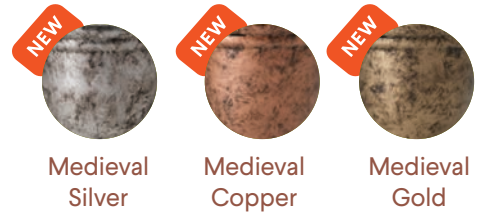


**14" Cylinder Planter**  
 TP1891F  
 OD 14.0" HT 19.0"  
 Cap. 7.5 Gal



**16" Cylinder Bowl**  
 BL1891E  
 OD 16.0" HT 9.0"  
 Cap. 5.1 Gal

**6** Cornwall



**17.5" Cornwall Planter**  
 DP1556D  
 OD 17.5" HT 13.9"  
 Cap 8.8 Gal  
 \* Also available in 12"



**14.5" Cornwall HB**  
 HG1556CB  
 OD 14.5" HT 8.1"  
 Cap. 3.5 Gal

# LATE SUMMER



Chantell Barizo,  
Accounting Staff with  
the 8" Bellagio Cover Pot





# 1 Bella

NEW



Moonlight  
Beige



Milk  
Chocolate



Raisin



**9.5" Bella Planter**  
PN088GA  
OD 9.5" HT 6.8"  
Cap. 1.4 Gal  
\* Also available in  
8.5", 10", 10.5", 11"

TOP SELLING ITEM



**12.5" Bella Planter**  
PN088CA  
OD 12.5" HT 9.5"  
Cap. 3.3 Gal  
\* Also available in  
12", 13.5", 14.5", 16.5"

TOP SELLING ITEM



**14" Bella Tall Planter**  
TP088EA  
OD 14.0" HT 11.3"  
Cap. 4.4 Gal  
\* Also available in 10", 12"

TOP SELLING ITEM

# 2 Bellagio



Papaya



Lagoon  
Teal



Dark  
Amethyst



**8" Bellagio Cover Pot**  
RT1163N  
OD 8.1" HT 6.5"  
Cap. 1.0 Gal



**12" Bellagio Bowl**  
BL1163K  
OD 11.9" HT 5.5"  
Cap. 1.6 Gal  
\* Also available in 9", 10"



**12" Bellagio Planter**  
DP1163K  
OD 12.0" HT 8.7"  
Cap. 2.5 Gal  
\* Also available in 10"

# NOVELTY



Lucas Androulidakis  
and Aimee Xiao, Designers.



1

## Halloween Face Planters

NEW



### 10" Pumpkin Planter (Sparky)

DP707K/PF4

OD 10.0" HT 7.0"

Cap. 1.6 Gal

Colors: Persimmon Orange,  
Meadow Green, Cotton White

\* Also available in Porky Face

NEW



### 10" Pumpkin Planter (Jack)

DP707K/PF3

OD 10.0" HT 7.0"

Cap. 1.6 Gal

Colors: Meadow  
Green, Persimmon Orange,  
Cotton White

NEW



### 1 Gal Cherie Planter (Porky)

RT1568T/PF2

OD 7.8" HT 6.7"

Cap. 0.9 Gal

Colors: Persimmon Orange,  
Black, Cotton White

2

## Cauldron Bowl

### 10" Cauldron Bowl

CL300H

OD 10.0" HT 5.9"

Cap. 1.4 Gal

Colors: Galvanized Metal,  
Black

3

## Margarita Planter



NEW

### 12" Margarita Planter

DP1971P/DPS1971P

OD 11.7" HT 8.6"

Cap. 1.5 Gal

Colors:

High Gloss Penny Top/Black Bottom,

High Gloss Bronze Top/Black Bottom,

High Gloss Silk Top/Black Bottom

4

## Milk Barrel Planter



### 12" Milk Barrel Planter

DP1835P

OD 12.0" HT 10.6"

Cap. 3.6 Gal

Colors:

Brushed Pewter Ivory,

Faux Mahogany with Pewter,

Galvanized Metal with Pewter

5

## Whiskey Barrel & Cask Planters



### 12" Whiskey Barrel Planter

DP2072S

OD 11.7" HT 7.9"

Cap. 2.4 Gal

Colors:

**Brown Ash with Black Band,**  
Chestnut with Black Band,  
Distressed Cedar with  
Black Band

\*Also available in 9", 15"



9" Whiskey Barrel Planter,  
in Chestnut with Black Band.



### 12" Cask Planter

DP1094K

OD 11.8" HT 8.0"

Cap. 2.3 Gal

Colors:

**Distressed Cedar with Black Band**  
Chestnut with Black Band,  
Brown Ash with Black Band,

\*Also available in 10", 16"



Al Shivraj,  
Sales Account Manager



**CAPOGNA**  
FLOWERS

A heartfelt thank you to our wonderful partner, **Capogna Flowers**, whose beautiful plants added a burst of life to our **Fall Guide!**

# Let's Grow Together!

As we wrap up this Fall Guide, we want to take some time to thank our clients and partners for the loyal support. You inspire us to keep striving for nothing less than greatness.

Remember, when you choose our products, you are covered from basic grower pots and trays to decorative and seasonal trending planters. We are here for you to make sure your future programs are a success.

Let's grow together and create a world where no plant is left hanging.  
**Happy planting!**

## Here's an estimated timeline to place your order smoothly with us:

### Pricing Quotations:

Please note that due to the current market conditions and supply chain disruptions, freight and manufacturing surcharges may be applied as a separate fee on your invoice.

To ensure CTI Living gives you our best pricing options, it will require **48 hours to 5 business days** to confirm pricing (depending on how many items are on quote). Full container and less than container pricing will be given to you. We price our products FOB port. Someone from our Sales team will be in contact with you to confirm your quote.

### Order placement:

Order placed: November – December 2023

Expected delivery date to greenhouse: **March– April 2024**

\*A more specific delivery date window will be given at time of order submission.

Order placed: January – February 2024

Expected delivery date to greenhouse: **May – June 2024**

\*A more specific delivery date window will be given at time of order submission.

### Tracking Orders: CTI's Online Portal

Every grower has been assigned a unique login to CTI's online portal. If you are new to us, a login credential will be assigned. You'll have the visibility to see the following on the portal:

- Viewing and tracking your order arrival date
- Your container number and vessel shipping company
- Your packing slips
- Estimated surcharges (Ocean + Land) \*

\* Please note, only available at time of loaded on a shipping vessel. Automatic notifications will be sent to the primary email contact if any changes to delivery dates happen during production or transit of product.

### Delivery of Product:

Trucking companies will contact growers **24 hours before delivery**.

### Invoicing, Billing and Terms

- CTI Living's payment terms are Net 30 days
- Payment can be received via ACH, Wire Transfer, Cheque or Credit Card
- You will receive your invoice within **15 business days after the order is delivered to the customer**

# Here are some of our key Fall Basic and Trays selection for your business



**1.4 Qt 6" Round Grow Pot**  
TRIN600F  
OD 6.0" HT 4.6"  
Cap. 1.4 Qt



**1.5 Qt 6" Round 6 Count Tray**  
TTY0106R  
OL 21.5" OW 11.0" HT 4.7"  
\* Fits TRIN600F



**3 Qt 7.5" Round Grow Pot**  
TRIN750J  
OD 7.4" HT 5.9"  
Cap. 2.9 Qt



**3 Qt 8" Round Grow Pot**  
TRIN800J  
OD 8.0" HT 5.1"  
Cap. 2.9 Qt



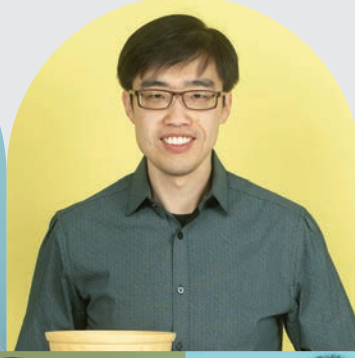
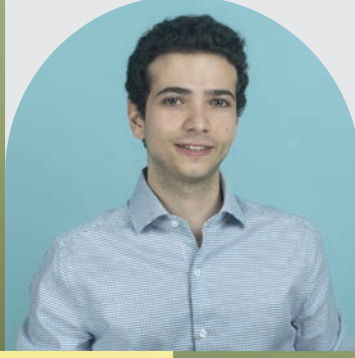
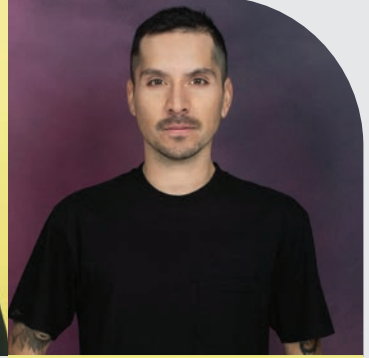
**3 Qt 8" Round Grow Pot  
(Smaller BD)**  
TRIN800K  
OD 7.9" HT 5.0"  
Cap. 2.6 Qt



**1 Gal 9" Round Grow Pot**  
TRIN900H  
OD 9.0" HT 6.3"  
Cap. 1.2 Gal

For more information, please contact our Sales Account Managers.







# Creating a Bond Between People and Plants

CONNECT WITH US!



North American Office | 86 Six Point Road, M8Z 2X2, Toronto, ON, Canada.